



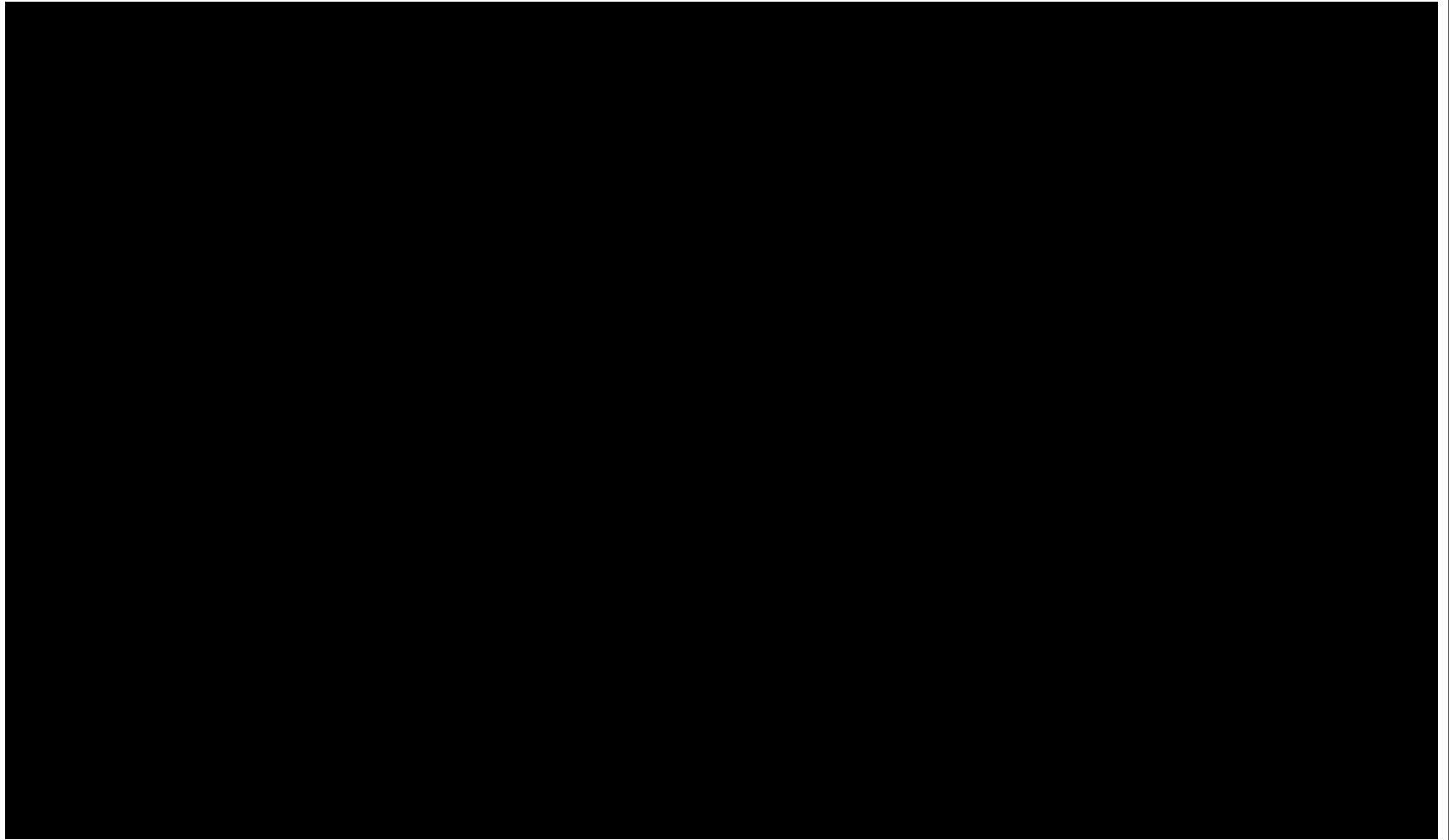
# Welcome

## To Godalming Junior School

*"A school where you never want to have a day off". Emily*



# Our school





# Order of play...

- Brief introduction
- Virtual tour of Year 3





# About our school

- 2 form entry junior school serving the local community since 1813
- We have a PAN of **60** - oversubscribed by 30 places
- Number currently on roll is **239** - (211 Jan 15)
- This year saw **88** parents put us down as their first choice school
- This year there were 20 sibling places allocated and **17** last year
- This year the furthest person to get into the school on the 'nearest school' rule lived **0.8km** away and last year it was the same, the previous year was **0.6km**
- Godalming Junior School is a foundation school - part of the Godalming Learning Partnership



Healthy School







# About Mr Samson

- Started teaching at Waverley Abbey, Farnham
- Moved to USA to teach in British International School in Houston, Texas
- Deputy Headteacher at Busbridge Junior School.
- Joined Godalming Junior School as Headteacher in January 2015.
- Married to Ruth
- Bella





# About Mr Poole

- Started teaching at Binscombe Junior/Loseley Fields Primary in 2002
- Taught in across both Key Stages
- Joined GJS in September 2015
- Married to Pippa and have 2 daughters





# About the team

- 9 class teachers
- Senior Leadership Team:
  - Headteacher
  - Deputy Head - Y6
  - US Phase Leader - Y5
  - LS Phase Leader - Y3
  - SENDCo
  - School Business Manager
- Specialist teachers for:
  - MFL (French)
  - Inclusion
  - PSHE
- Highly skilled support staff including 15 Learning Support Assistants and 3 HLTA's
- Home School Link Worker
- Welcoming office staff





## *This is a wonderful school but don't take my word for it...previous students*

*"A Community where everyone supports each other" - Abbie*

*"This school gives you opportunities to develop friendships" - Sinead*

*"The teachers are caring and there is such a positive and happy atmosphere" - Emily*

*"We offer a huge range of clubs and there is always something on offer for you to do" - Rudy*

*"I have grown in confidence since coming to Godalming Junior School, going on school trips, being in a production and speaking up in class has enabled this to happen" - Luke*

*"We are always doing something charitable" - Rose*

*"You never want to have a day off school" - Emily*

*"At Godalming Junior School there are lots of opportunities to make friends and it is like one big family" - Rose*

*"Everyone is given a fair chance here" - Jack*

*"Our values help teach us HOW we should treat each other" - Freddie*





## *This is a wonderful school but don't take my word for it...last year's leavers*

*"This has been such a good school. All the teachers are really nice and easy to talk to if you have any worries. Godalming Junior School has prepared me really well for secondary school" - Matt*

*"Godalming Junior School is an amazing school and lets students shine. It also encourages students to achieve the best they can and have fun at the same time" - Chloe*

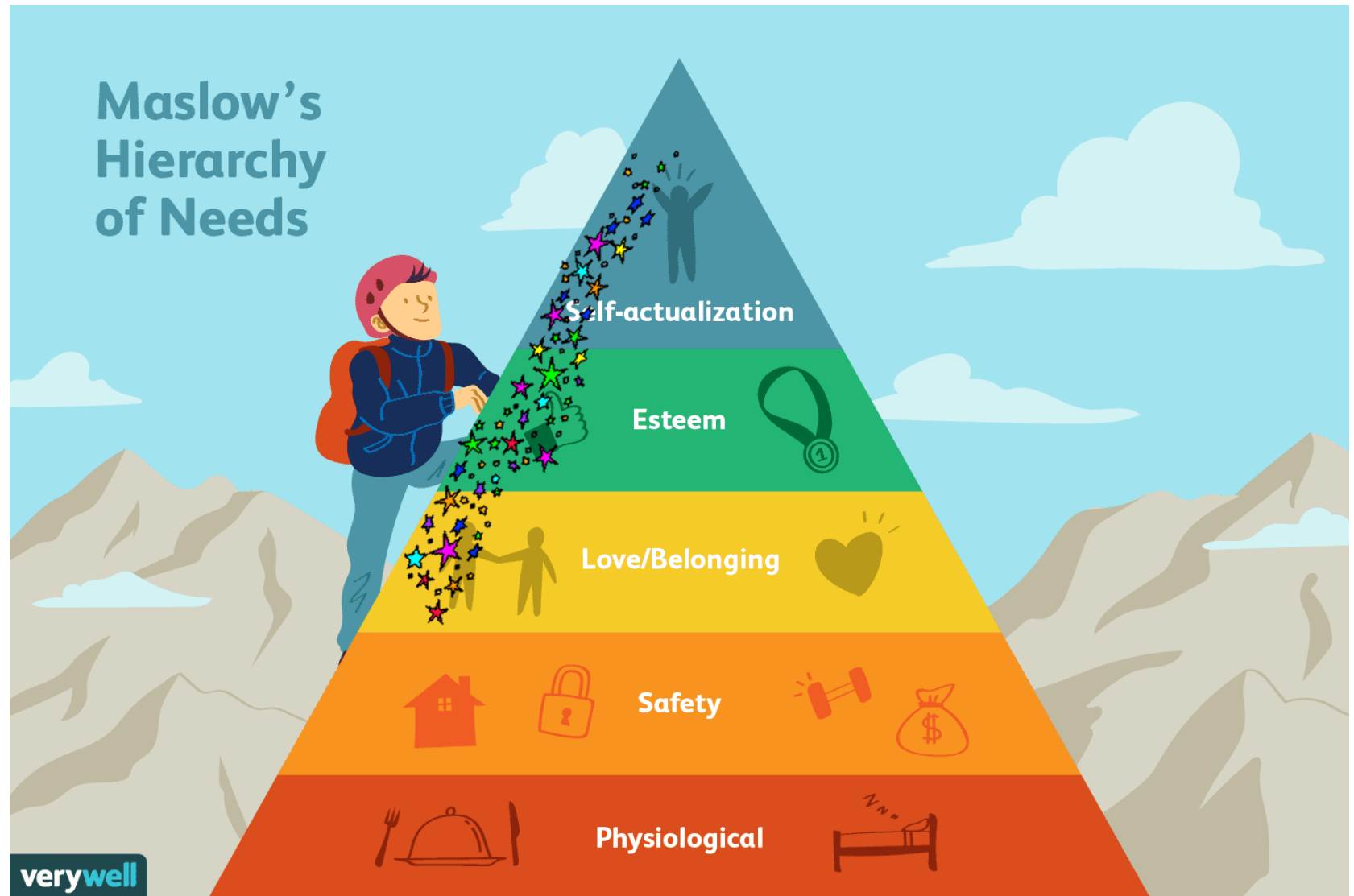
*"GJS is a school where everybody feels included, my time here has been amazing" - Anwen*

*"I am leaving GJS with an education, friends and a smile on my face" - Theo*

*"My experience here has been really enjoyable because of the kind teachers, the fun trips, the organised lessons and the way they have turned us into kind, caring and respectful children" - Amelie*



# Maslow's Hierarchy of Needs





# What makes us special?

- Bespoke Curriculum - **relevant** to OUR children, **challenging** and **fun**!
- Quality texts form the bedrock of our English curriculum
- Dynamic Staff - teach with passion, personality, are willing to go the extra mile and are great role models!
- A true sense of community - links with local schools, churches and charities
- Well behaved children who are **ACTIVE** learners
- Astro Pitch and all weather playground
- Designated learning spaces - Art Studio, Music Room and Food Technology area (kitchen), Mindfulness Pod
- A highly skilled governing body
- Sensory Garden
- Supportive parent body
- 'Dyslexic Friendly' classrooms
- Restorative Justice behaviour management policy
- A school which values health and wellbeing in ALL equally as much as academic success
- Digby
- **Love...Live ...Learn**



# What makes us special?

22 Jul 1931

Godalming b. SCHOOL. Mixed DEPT. M. G. Worthy Head Teacher.

| Date.       | Name of Offender. | Age. | Class or Standard. | Offence.   | Nature of Punishment.            | Date of Punishment. | By whom Inflicted.       | Initials of Responsible Teacher. | Exam Man |
|-------------|-------------------|------|--------------------|--|----------------------------------|---------------------|--------------------------|----------------------------------|----------|
| Aug 8.2.31  | Eric Terrapa      | 13   | IV                 | Reported by Teacher for repeated disobedience.   | 2 strokes on hand                | M.G. Worthy.        |                          |                                  |          |
| Aug 10.7.31 | Peggy Sfarbes     | 12   | I                  | Reported by teacher for repeated rudeness.   | 2 strokes on hand                | 10.7.31             | F. R. Denton (in charge) | M.G.W.                           |          |
| 15.7.31     | George Stevens    |      | IV                 | Impertinence to teacher, refusing to obey.   | 3 strokes on hand                | 14.7.31             | F. R. Denton             | M.G.W.                           |          |
| 17.7.31     | Oliver Gileed     |      | XI                 | Climbing through window into playground.   | 2 strokes on hand                | 17.7.31             | F. R. Denton             | M.G.W.                           |          |
| 21.7.31     | Maurice State     | 10   | VI                 | Playing in school lavatory + making use of   | } 2 strokes on hand.             | 21.7.31             | M.G. Worthy              |                                  |          |
| " "         | Walter Bartlett   | 9    | VI                 | Improper expression  |                                  |                     |                          |                                  |          |
| 27.7.31     | Reginald Paddon   | 10   | VI                 | Stealing pistol + 50 cartridges from Teacher's drawer, taken same out of school + firing the cartridges. Repeatedly lying about offence. | 2 strokes on hand<br>" " on seat | 27.7.31             | M.G. Worthy.             |                                  |          |
| 21.10.31    | Keslie Roberts    | 10   | V                  | Climbing on school fence directly against school orders.   | 2 strokes on hand                | 21.10.31            | M.G. Worthy.             |                                  |          |
| 17.11.31    | Lucas Douglas     | 10   | V                  | Fighting in playground and repeatedly lying about offence.   | 2 " " "                          | 17.11.31            | M.G. Worthy.             |                                  |          |

Setol





# The Real Schools Guide 2019



SCHOOL NAME

GODALMING JUNIOR SCHOOL

LOCAL AUTHORITY

SURREY

RATING

\*\*\*\*\*

OVERALL

53.6/100

RANK

4,275/14,749

ATTAINMENT

\*\*\*\*\*

ATTAINMENT FOR ALL

\*\*\*\*\*

PROGRESS

\*\*\*\*\*

ATTENDANCE

\*\*\*\*\*

ATTENDANCE

\*\*\*\*\*

SurreyLive

Top Rated School  
in Godalming



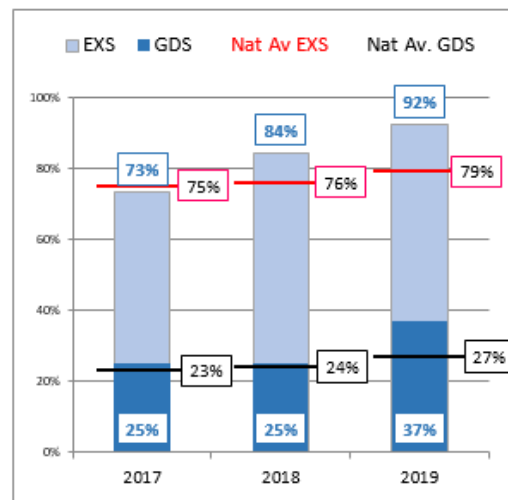
# Since January 2015...

- Quality of education for ALL has improved – level of **challenge, relevant**, children actively **engaged** in their learning – progress and attainment improving year on year
- A new uniform has been introduced across the school
- Areas of the school have been improved
- 1) School Hall 2) Art Studio 3) Horsa Hut 4) Windows
- A values based education introduced – CONFIDENCE/TOLERANCE
- A successful Ofsted inspection January 2017
- ALL members of the school community are proud to be here!
- 10RICHMENT programme introduced
- End of Year attainment is improving
- Highest performing junior school in the local area last year for children achieving the expected standard in writing, reading and maths combined 77% national average 64%

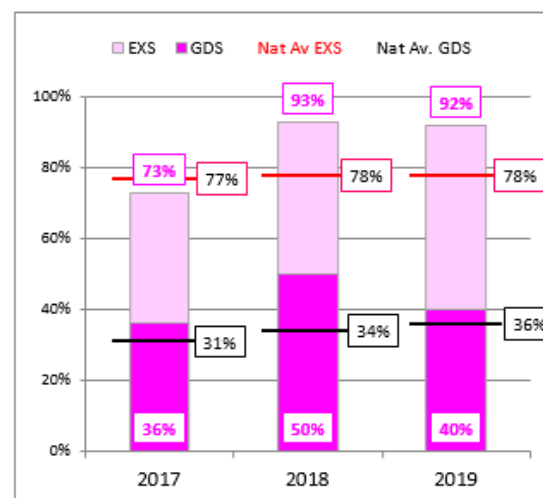
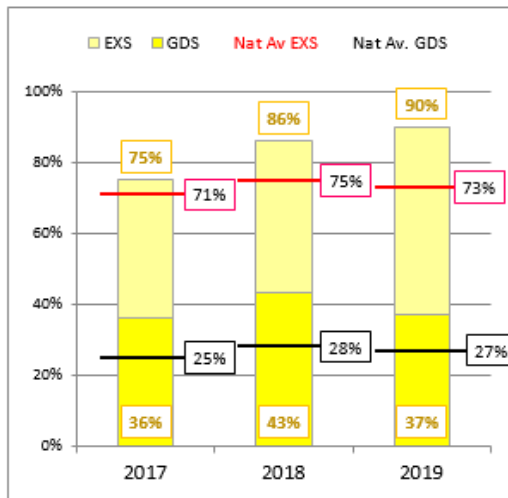
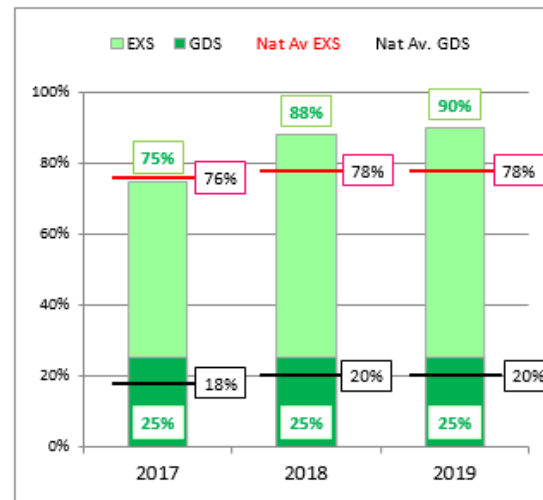




## Maths



## Writing



## Reading

## SPAG



**CONFIDENCE** **TRUST** **TOLERANCE**  
**CREATIVITY** **RESILIENCE** **RESPECT** **INDEPENDENCE** **HONESTY**  
**PERSEVERANCE** **FORGIVENESS** **FRIENDSHIP** **COMMUNITY**





# Life at GJS

- School starts at 8.45am (children allowed on school site from 8.30am)
- School ends at 3.05pm - collected from front playground
- Tasks differentiated AT LEAST 3 ways through our 'MUST', 'SHOULD', 'COULD' approach
- We assess the children all the time - formally and informally and adjust our curriculum accordingly
- Year 6 Buddies ensure THEY play their part to help the children settle in to their new school
- Curriculum is brought alive by theme days, enrichment, visits and residential trips in Year 4 and Year 6
- We do not stream our classes for any subjects
- We do not offer before school care
- Last year our Year 6 children moved on to:
  - Broadwater
  - Rodborough
  - Guildford County
  - Priors Field
  - Churcher's College



Godalming Junior School

10<sup>rich</sup>men<sup>T</sup>



INTER  
E

A  
W  
e  
k



E



# What Ofsted said...

*...'teaching across the school is consistently strong, and questioning is used to good effect'*

*...'Pupils are enthusiastic learners who conduct themselves extremely well in lessons and around the school'...*

*'Pupils take pride in their work and tackle the activities teachers give them with relish'*

*'In lessons, teachers challenge pupils to work as hard as they can and give them interesting activities to do'*

*'Children are respectful to their teachers, considerate towards each other and polite to visitors'.*

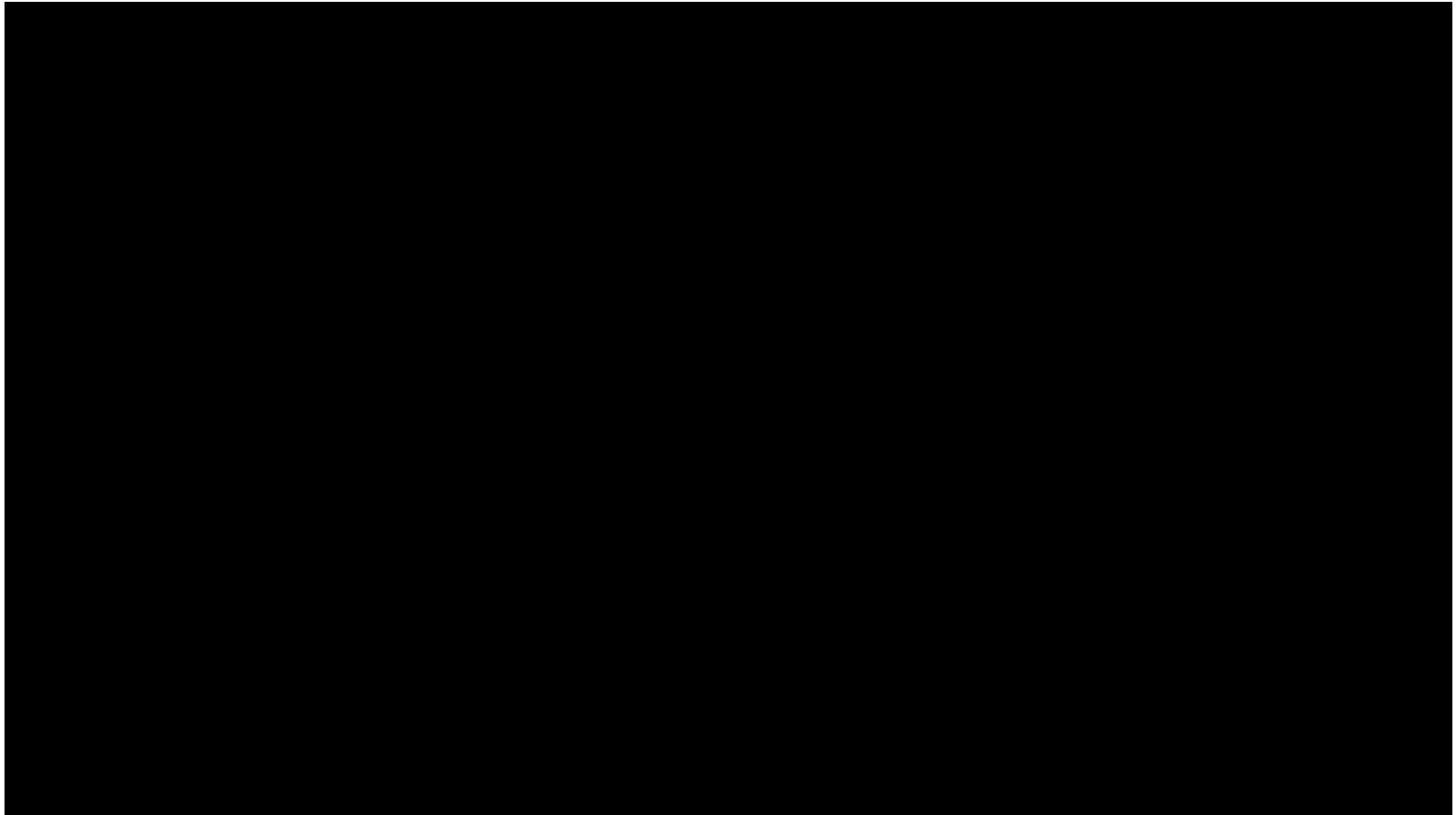
*'Leaders make regular checks on how well pupils are doing and work with teachers to ensure that ALL pupils receive the help they need to achieve their potential'...*

*'Teachers are encouraged to observe each other so that the best practice is shared throughout the school'*

*'underpinned by the compelling values of 'Love, Live, Learn' you have galvanised your staff to create a welcoming community that has the achievement of ALL pupils at its heart'*



# Welcome to Year 3







If you have any questions or queries please contact us at:  
[info@godalming-junior.surrey.sch.uk](mailto:info@godalming-junior.surrey.sch.uk)