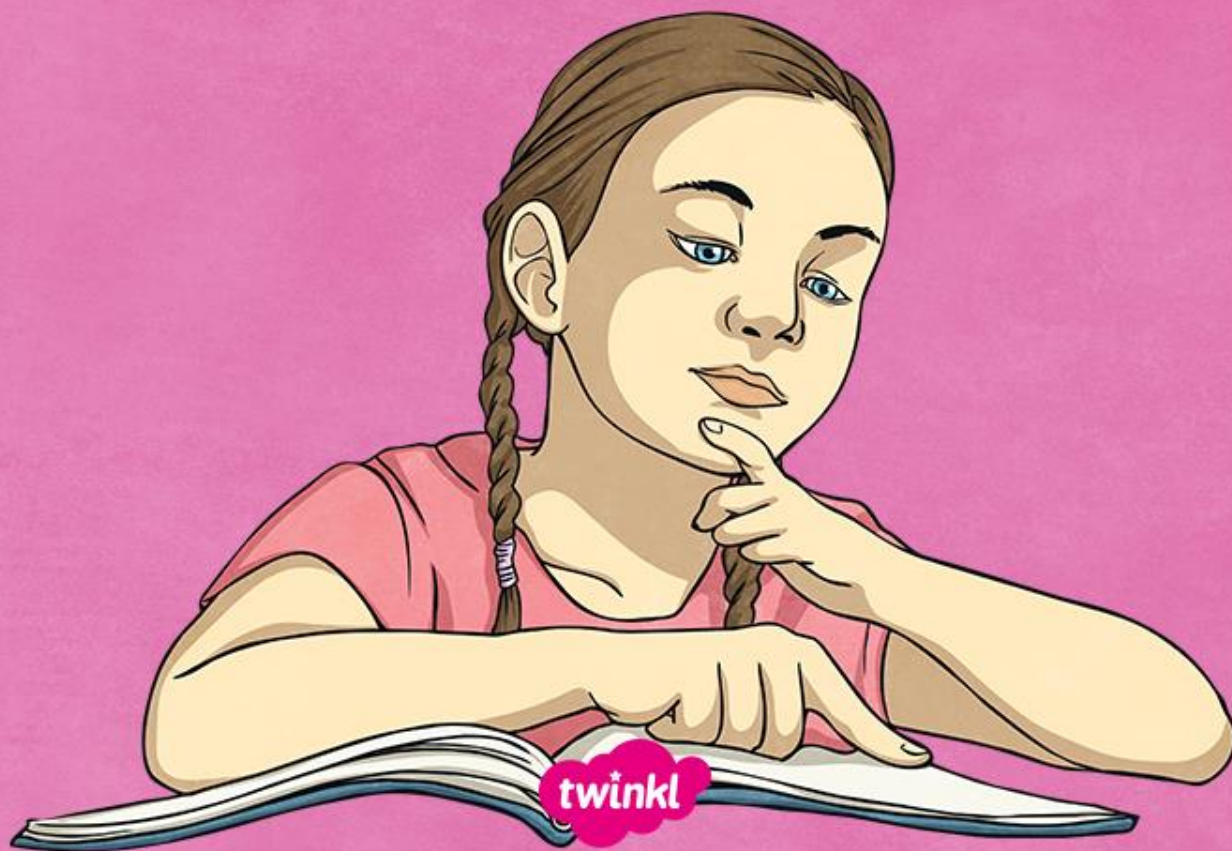


# Y5 Instructions:

## Example Text



## Y5 Instructions: Example Text

### How to Fix a Puncture on a Monster Truck

Have you ever had a puncture on a bicycle or seen a flat tyre on a car? Imagine if the puncture was on the huge tyre of a monster truck. How would you fix the puncture and get the truck back on track performing stunts and crushing cars? Follow these instructions and you will find out how to fix it!

#### You will need:

- a very large container of warm water (a paddling pool would be ideal)
- a strong rubber patch
- a piece of sandpaper
- some chalk
- a coloured wax crayon
- rubber solution (similar to glue)



#### Method

1. Firstly, remove the tyre from the truck with the help of several strong people, who are able to help to lift the truck off the ground.
2. Perform a thorough check to see if any sharp objects remains stuck in the tyre and carefully remove them if necessary. This is particularly important if the truck has been driving over other vehicles.
3. If the source of the puncture is not clear, you will need to locate it by reinflating the tyre with air. An electrical pump could speed up this process considerably.
4. After inflating, try looking or listening for any air leaking out. This may involve the use of a small stepladder to reach the top of the tyre.
5. Alternatively, submerge the tyre under water in a very large container such as a paddling pool. Any leaking air can be identified by bubbles rising to the surface of the water.

## Y5 Instructions: Example Text

6. Once the puncture is located, mark the affected area with a piece of chalk or wax crayon. Keep the chalk nearby for later.

7. Next, take the sandpaper and lightly rub around the damaged area to roughen the surface.

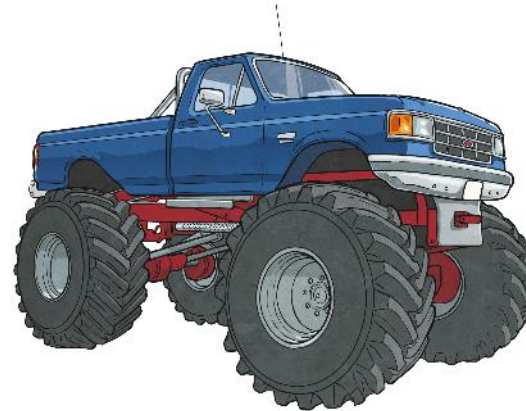
8. Spread the rubber solution over the area then allow a few seconds for it to become tacky and achieve the correct consistency.

9. Use the chalk, which you set aside earlier, to absorb any excess water or liquid.

10. Remove the patch from its packet, making sure not to get any dirt on it, then place it over the puncture and smooth it down carefully until securely stuck down. Be sure to apply it meticulously into any deep ridges of the tyre.

Your tyre is now ready to be returned into place and your truck should be ready to go crushing again!

Warning: If you ever actually own or drive a monster truck, always remember to ask an expert before trying to fix any part of it yourself!



## **How to Fix a Puncture on a Monster Truck**

Have you ever had a puncture on a bicycle or seen a flat tyre on a car? Imagine if the puncture was on the huge tyre of a monster truck. How would you fix the puncture and get the truck back on track performing stunts and crushing cars? Follow these instructions and will find out how to fix it!



## You will need:

- a very large container of warm water (a padding pool would be ideal)
- a strong rubber patch
- a piece of sandpaper
- some chalk
- a coloured wax crayon
- rubber solution (similar to glue)



## Method

1. Firstly, remove the tyre from the truck with the help of several strong people, who are able to help to lift the truck off the ground.
2. Perform a thorough check to see if any sharp object remains stuck in the tyre and carefully remove them if necessary. This is particularly important if the truck has been driving over other vehicles.
3. If the source of the puncture is not clear, you will need to locate it by reinflating the tyre with air. An electrical pump could speed up this process considerably.
4. After inflating, try looking or listening for any air leaking out. This may involve the use of a small stepladder to reach the top of the tyre.
5. Alternatively, submerge the tyre under water in a very large container such as a paddling pool. Any leaking air can be identified by bubbles rising to the surface of the water.

6. Once the puncture is located, mark the affected area with a piece of chalk or wax crayon. Keep the chalk nearby for later.
7. Next, take the sandpaper and lightly rub around the damaged area to roughen the surface.
8. Spread the rubber solution over the area then allow a few seconds for it to become tacky and achieve the correct consistency.
9. Use the chalk, which you set aside earlier, to absorb any excess water or liquid.
10. Remove the patch from its packet, making sure not to get any dirt on it, then place it over the puncture and smooth it down carefully until securely stuck down. Be sure to apply it meticulously into any deep ridges of the tyre.



Your tyre is now ready to be returned into place and your truck should be ready to go crushing again!

Warning: If you ever actually own or drive a monster truck, always remember to ask an expert before trying to fix any part of it yourself!

